



© Automobili Lamborghini S.p.A.

The information and procedures published below are strictly confidential and exclusively for the Lamborghini Dealer Network and Authorized Service Points. All copyrights are property of Automobili Lamborghini S.p.A based on copyright law. All of the PDF chapters in the WEB workshop manuals described below are based on information available at the time of publication. The company reserves the right to make updates and modifications. The following are prohibited: reprinting, reproduction, forwarding to unauthorized people and/or third parties, and translation, including partial, without written authorization from Automobili Lamborghini S.p.A.



Disassembling the side member

Preliminary operations

- Lift the vehicle on the car lift (000000).
- Remove the rear wheel (060103).
- Disassemble the rear wheel arch (082103).

Disassembling the side member

1. Remove the panel above the side member.
2. Remove the screw (A-Fig.1) at the rear, accessing it through the space created by the disassembled wheel arch.
3. Unscrew the 3 screws (B-Fig.2) securing the side member to the car at the bottom.
4. Unscrew the 6 screws (C-Fig.3) securing the side member to the car at the top.

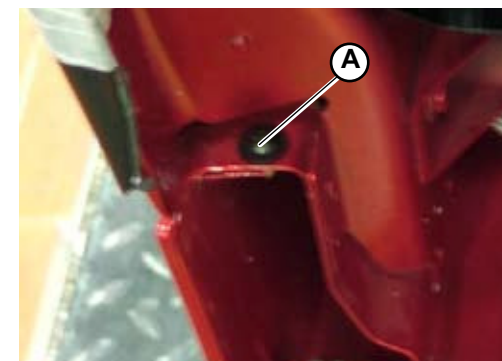


Fig.1

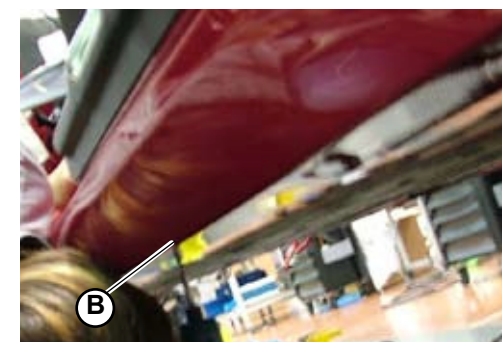


Fig.2

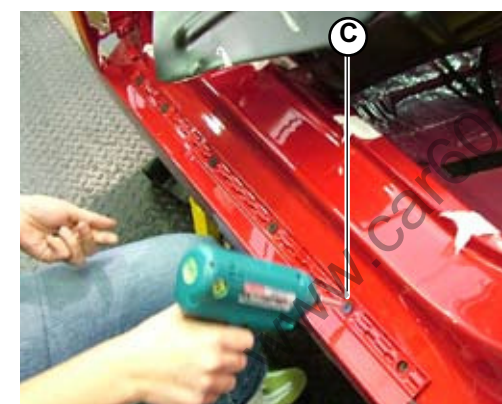


Fig.3



® Automobili Lamborghini S.p.A.

The information and procedures published below are strictly confidential and exclusively for the Lamborghini Dealer Network and Authorized Service Points. All copyrights are property of Automobili Lamborghini S.p.A based on copyright law. All of the PDF chapters in the WEB workshop manuals described below are based on information available at the time of publication. The company reserves the right to make updates and modifications. The following are prohibited: reprinting, reproduction, forwarding to unauthorized people and/or third parties, and translation, including partial, without written authorization from Automobili Lamborghini S.p.A.

5. Remove the side member from the 3 supports (**D-Fig.4**).

6. Remove the side member (**E-Fig.5**).



Fig.4

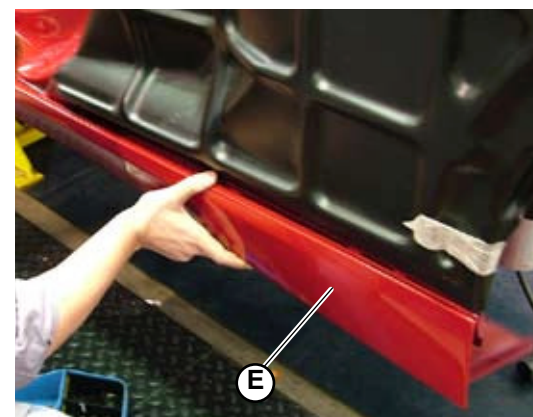


Fig.5